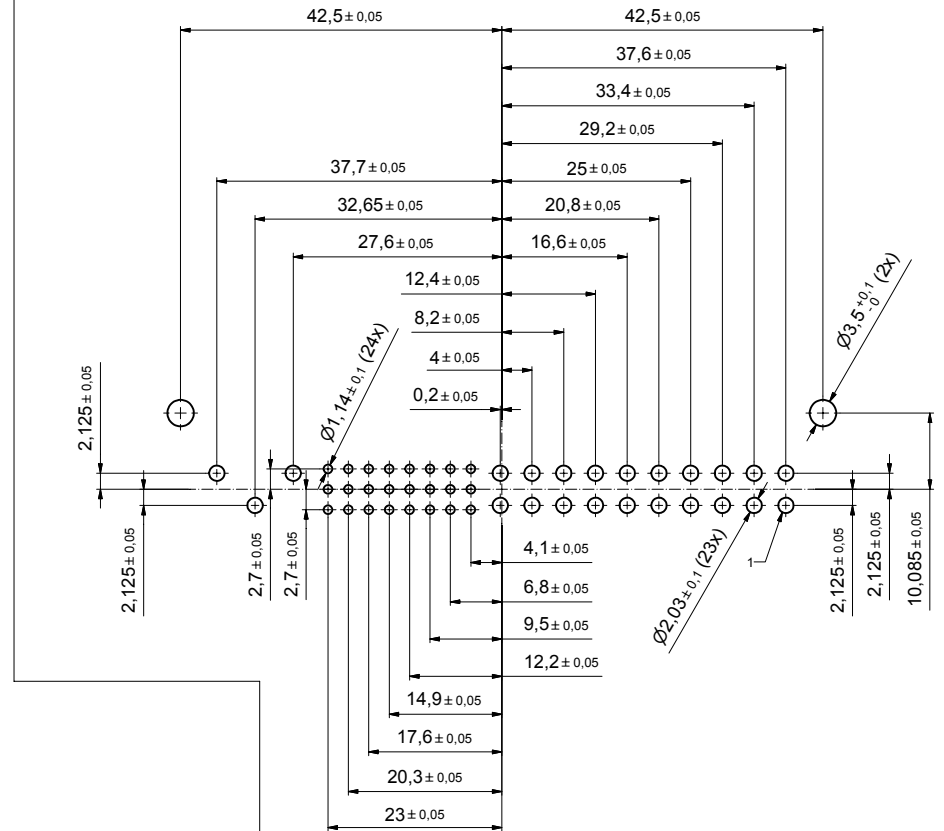
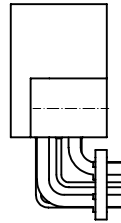
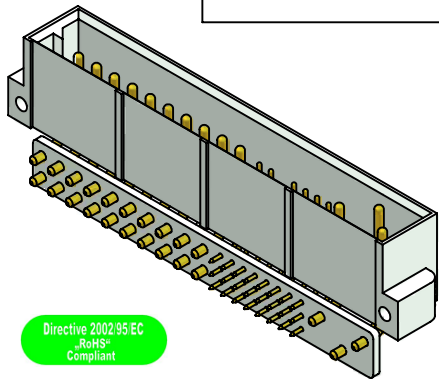


see note 5

Ⓟ



PCB hole pattern

NOTES:

- MATERIALS AND FINISHES:**
 - INSULATOR: GLASS FILLED PLASTIC UL 94 V-0 RATED, GREY RAL 7035
 - CONTACTS: COPPER ALLOY, PLATING: 0,8 µM GOLD OVER NICKEL
- ELECTRICAL CHARACTERISTICS:**

CREEPING AND CLEARANCE DISTANCE; MINIMUM:

 - CONTACT 47 TO CONTACT 46: 2,5 MM
 - CONTACT 47 TO CONTACT 45: 3,2 MM
 - CONTACT 46 TO CONTACT 45: 3,2 MM
 - CONTACT 47 TO SIGNAL CONTACTS: 6,4 MM
 - CONTACT 46 TO SIGNAL CONTACTS: 6,4 MM
 - CONTACT 45 TO SIGNAL CONTACTS: 2,0 MM

CONTACT CURRENT RATING:

 - POWER CONTACTS POS. 45-47: 40 AMPERES CONTINUOUS, ALL CONTACTS UNDER LOAD
 - POWER CONTACTS POS. 1-20: 28 AMPERES CONTINUOUS, ALL CONTACTS UNDER LOAD
 - SIGNAL CONTACTS: 3 AMPERES NOMINAL

INITIAL CONTACT RESISTANCE:

 - POWER CONTACTS: 0,0007 OHM MAX. PER IEC 512-2, TEST 2b
 - SIGNAL CONTACTS: 0,004 OHM MAX. PER IEC 512-2, TEST 2b

INSULATION RESISTANCE: 5 G OHM PER IEC 512-2, TEST 3a

VOLTAGE PROOF:

 - CONTACTS POS. 45, 46, 47: 3 kV r.m.s.
 - CONTACTS POS. 1-20: 1,5 kV r.m.s.
 - CONTACTS POS. 21-44: 1 kV r.m.s.
- WORKING TEMPERATURE: -55°C TO +125°C**
- ORDER OF CONTACT MATING:**
 - MATE: POS. 45 / 2. MATE: POS. 46, 47 / LAST MATE: POS. 27
- CONNECTOR IS PART MARKED: CPH47W23MARCSK9X CONEC ABC** Ⓟ

quantity	part description	partlist	item	dwg no. / norm	material
1	Fixing plate		10		
1	Signal contact type 4 (Pos. 27)		9		
7	Signal contact type 3 (Pos. 21,24,30,33,36,39,42)		8		
8	Signal contact type 2 (Pos. 22,25,28,31,34,37,40,43)		7		
8	Signal contact type 1 (Pos. 23,26,29,32,35,38,41,44)		6		
1	Power contact type 4 (Pos. 46)		5		
10	Power contact type 3 (Pos. 1,3,5,7,9,11,13,15,17,19)		4		
2	Power contact type 2 (Pos. 45,47)		3		
10	Power contact type 1 (Pos. 2,4,6,8,10,12,14,16,18,20)		2		
1	Case 47pos. male angled standard		1		

THIS DRAWING MAY NOT BE COPIED OR REPRODUCED IN ANY WAY, AND MAY NOT BE PASSED ON TO A THIRD PARTY WITHOUT THE WRITTEN PERMISSION AND COPYRIGHT OF CONEC GmbH		DO NOT ALTER CAD DRAWING BY HAND		finish: see notes		tolerance ISO 2768-m		scale: 2:1	
date		name		material: see notes		date		title: PLUG CONNECTOR 47pos. SOLDER PIN ANGLED, STANDARD CompactPCI	
drawn 21.02.06		Schmidt		dwg no: [Inventor]		date		DIN-A2	
appd. 21.02.06		Kühle		rev		dwg no: 45K2A007		sh: 1	
norm				dwg no: [Inventor]		rev		sh: 1	
d-old				dwg no: [Inventor]		rev		sh: 1	
2 x b		A 3245		13.01.09		HS		part no: CPH47W23MARCSK9X	
a		Origin						CONEC	
rev		description		date		name			

Directive 2002/95/EC
RoHS
Compliant