



EPCOS

Sample Kit 2009



Ring Core Chokes for Power Lines

Series B82721

www.epcos.com

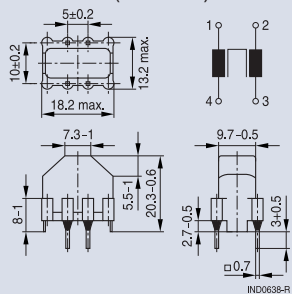
Series B82721

| | | | | | | | | | | | |
|------------------|--------------|-------------|-----------|-------------|-------------|-------------|-------------|-------------|-------------|-------------|------------|
| L_R | mH | 39 | 27 | 27 | 10 | 6.8 | 3.3 | 1 | 0.7 | 0.4 | 0.2 |
| I_R | A | 0.4 | 0.5 | 0.4 | 0.7 | 1.2 | 1.5 | 2.0 | 4.0 | 3.6 | 6.0 |
| $L_{stray, typ}$ | μ H | 450 | 290 | 300 | 110 | 80 | 37 | 13 | 7 | 6 | 2.5 |
| R_{typ} | m Ω | 2000 | 1100 | 1700 | 550 | 280 | 180 | 80 | 30 | 35 | 15 |
| T_R | $^{\circ}$ C | 40 | 60 | 40 | 60 | 40 | 40 | 40 | 40 | 40 | 40 |
| UL/VEDE | | yes | yes | yes | yes | yes | yes | yes | yes | yes | yes |
| Ordering code | B82721 | A/K2401N020 | K2501N022 | A/K2401N021 | A/K2701N020 | A/K2122N020 | A/K2152N001 | A/K2202N001 | A/K2402N020 | A/K2362N001 | K2602N020 |

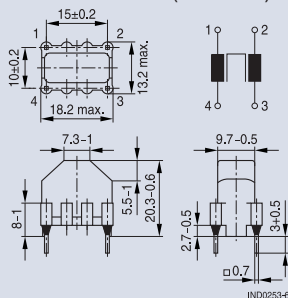
- Rated current: I_R at 50 Hz and T_R
- Rated voltage: 250 V AC (50/60 Hz)
- Higher inductance or intermediate values possible upon request
- Approx. 1% stray inductance for symmetrical interference suppression
- Higher rated current I_R available with series B82722 ... B82726
- Vertical version with lead spacing 5 x 10 mm available (B82721J*)

Dimensional drawings and pin configurations

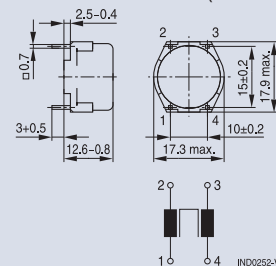
Vertical version (B82721J)



Vertical version (B82721K)

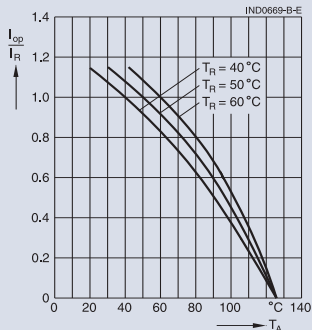


Horizontal version (B82721A)



Tolerances to ISO 2768-C unless otherwise noted. Dimensions in mm.

Current derating I_{op}/I_R versus temperature T



Impedance $|Z|$ versus frequency f

